

The Nashira

4 bedroom home



- Large Kitchen/Dining Room with French doors to garden
- Separate Utility
- En-suite to Bedroom 1
- Integral garage

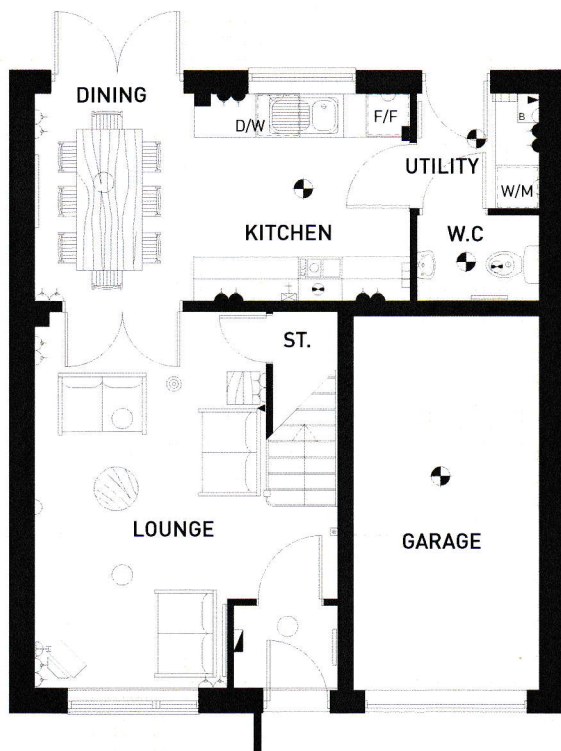


BARRATT
HOMES
find the one

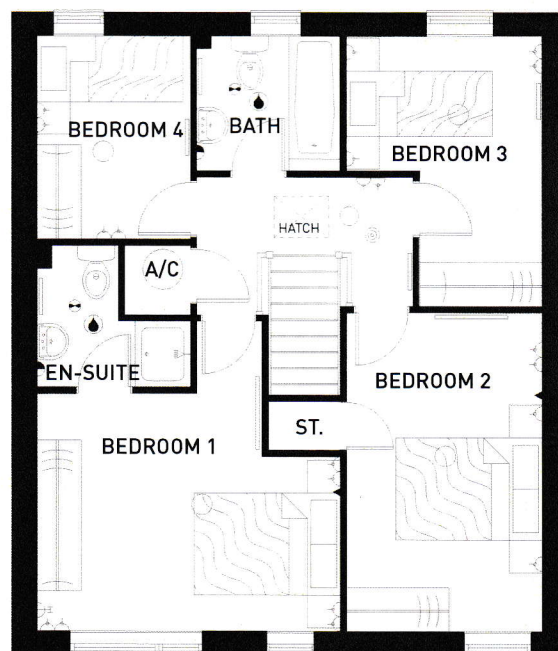


The Nashira

4 bedroom home



Ground Floor



First Floor

KEY

- Pendant lamp fitting
- ⊙ Batten lamp fitting
- Splash proof lamp fitting
- ⊗ Energy efficient light
- ⌋ Switched socket outlet
- ⌋ Double switched socket outlet
- ⌋ Switched socket outlet above worktop

- ⌋ Double switched socket outlet above worktop
- ⌋ Socket outlet below worktop switch from control panel
- ⌋ Shaver socket
- ▲ Telephone outlet point
- ⌋ T.V. aerial socket
- ⌋ Cooker control unit
- ⌋ Extractor fan

- ▼ Gas point
- ⊙ Smoke detector
- Radiator
- A/C Airing cupboard
- W/M Washing machine space
- D/W Dishwasher machine space
- F/F Fridge/Freezer space

Ground Floor (Approximate Dimensions)

Lounge	5185 _{max} x 4150 _{max} 17'0" max x 13'7" max
Kitchen/Utility	4485 _{max} x 2840 _{max} 14'8" max x 9'3" max
Dining	2840 x 2340 9'3" x 7'8"
W.C	1555 x 985 5'1" x 3'2"

First Floor (Approximate Dimensions)

Bedroom 1	4245 _{max} x 4150 _{max} 13'11" max x 13'7" max	Bedroom 4	2775 x 2100 9'1" x 6'10"
En-suite	2100 _{max} x 1940 _{max} 6'10" max x 6'4" max	Bathroom	1960 x 1845 6'5" x 6'0"
Bedroom 2	4360 x 2675 14'3" x 8'9"		
Bedroom 3	3700 _{max} x 2675 _{max} 12'1" max x 8'9" max		

Note: Dimensions should not be used for carpet sizes, appliance spaces or tiems of furniture. Purchasers furniture may be of a different size to that indicated.

IMPORTANT NOTICE: These particulars are for illustration only. We operate a policy of a continuous product development and individual features such as windows, garages and elevational treatments may vary from time to time as may heating and electrical layouts. Consequently these particulars should be treated as general guidance only and cannot be relied upon as accurately describing any of the specified matters prescribed by any order made under the property misdescriptions act 1991. Nor do they constitute a contract, part of a contract or a warranty. H. 3/11