

The Mira

3 bedroom, 3 storey townhouse



- Lounge/Dining with French doors to Balcony
- Large Kitchen/Breakfast Room
- En-suite to Bedroom 1 & 2
- Balcony to Bedroom 1
- Integral Garage

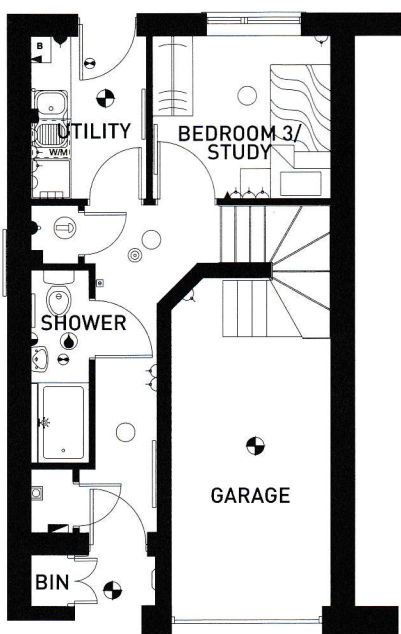


BARRATT
HOMES
find the one

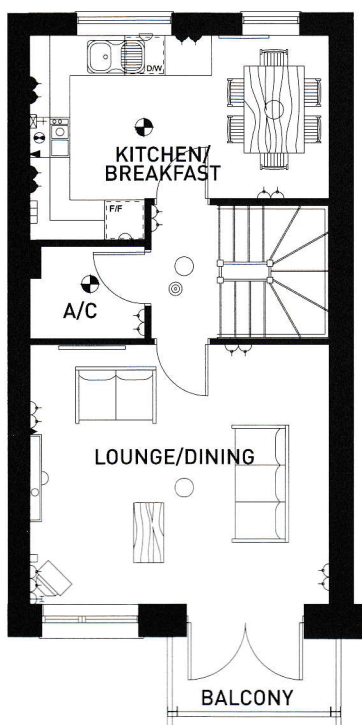


The Mira

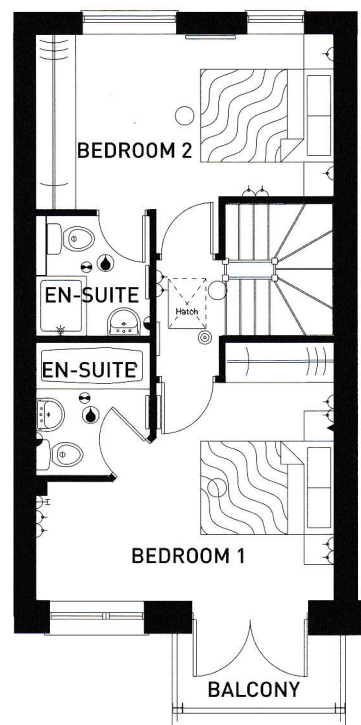
3 bedroom, 3 storey townhouse



Ground Floor



First Floor



Second Floor

KEY

- Pendant lamp fitting
- ⊙ Batten lamp fitting
- ⦿ Splash proof lamp fitting
- ⊗ Energy efficient light
- ⌋ Switched socket outlet
- ⌋ Double switched socket outlet
- ⌋ Switched socket outlet above worktop

- ⌋ Double switched socket outlet above worktop
- ⌋ Socket outlet below worktop switch from control panel
- ⌋ Shaver socket
- ▲ Telephone outlet point
- ⌋ T.V. aerial socket
- ⌋ Cooker control unit
- ⌋ Extractor fan

- ▼ Gas point
- ⊙ Smoke detector
- Radiator
- A/C Airing cupboard
- W/M Washing machine space
- D/W Dishwasher machine space
- F/F Fridge/Freezer space

Ground Floor (Approximate Dimensions)

Bedroom 3/Study	2650 x 2430 8'8" x 7'11"
Utility	2430 x 1710 7'11" x 5'7"
Shower Room	2860 x 855 9'4" x 2'9"

First Floor (Approximate Dimensions)

Kitchen/Breakfast	4480 x 3062 max 14'8" x 10'0" max
Lounge/Dining	4480 x 3880 14'8" x 12'8"

Second Floor (Approximate Dimensions)

Bedroom 1	4480 x 3865 max 14'8" x 12'8" max
En-suite	1970 x 1715 max 6'5" x 5'7" max
Bedroom 2	4480 x 3320 max 14'8" x 10'10" max
En-suite	1780 x 1715 5'10" x 5'7"

Note: Dimensions should not be used for carpet sizes, appliance spaces or items of furniture. Purchasers furniture may be of a different size to that indicated.
IMPORTANT NOTICE: These particulars are for illustration only. We operate a policy of a continuous product development and individual features such as windows, garages and elevational treatments may vary from time to time as may heating and electrical layouts. Consequently these particulars should be treated as general guidance only and cannot be relied upon as accurately describing any of the specified matters prescribed by any order made under the property misdescriptions act 1991. Nor do they constitute a contract, part of a contract or a warranty. H. 6/11