

# The Hadir

2 bedroom home



- Open plan Lounge/Dining room
- En-suite to Bedroom 1
- Two double bedrooms



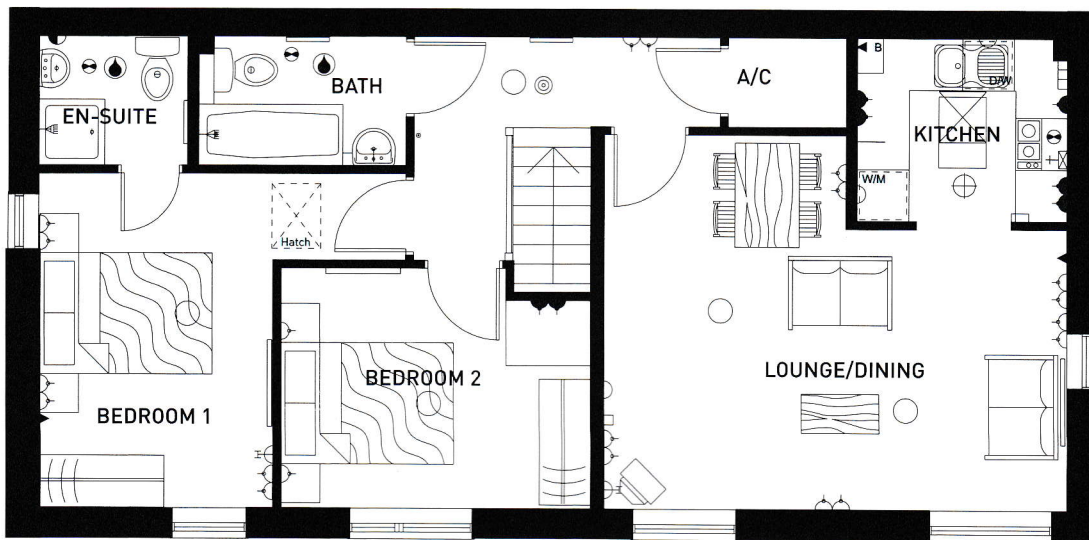
**BARRATT**  
HOMES

*find the one*



# The Hadir

2 bedroom home



## First Floor

- KEY**
- Pendant lamp fitting
  - ⊕ Batten lamp fitting
  - ⦿ Splash proof lamp fitting
  - ⊗ Energy efficient light
  - ⌋ Switched socket outlet
  - ⌋⌋ Double switched socket outlet
  - ⌋ Switched socket outlet above worktop
  - ⌋⌋ Double switched socket outlet above worktop
  - ⌋ Socket outlet below worktop switch from control panel
  - ⌋ Shaver socket
  - ▲ Telephone outlet point
  - ⌋ T.V. aerial socket
  - ⊕⊖ Cooker control unit
  - ⊕⊖ Extractor fan
  - ▼ Gas point
  - ⊙ Smoke detector
  - ▬ Radiator
  - A/C Airing cupboard
  - W/M Washing machine space
  - D/W Dishwasher machine space
  - F/F Fridge/Freezer space

### First Floor (Approximate Dimensions)

Kitchen	2420 x 2100 7'11" x 6'10"	Bedroom 1	4240 <sub>max</sub> x 3850 <sub>max</sub> 13'10" <sub>max</sub> x 12'7" <sub>max</sub>
Lounge/Dining	5366 <sub>max</sub> x 4305 <sub>max</sub> 17'7" <sub>max</sub> x 14'1" <sub>max</sub>	En-suite	1748 x 1475 5'8" x 4'10"
		Bedroom 2	3603 <sub>max</sub> x 2755 <sub>max</sub> 11'9" <sub>max</sub> x 9'1" <sub>max</sub>
		Bathroom	2362 x 1748 7'9" x 5'8"

Note: Dimensions should not be used for carpet sizes, appliance spaces or items of furniture. Purchasers furniture may be of a different size to that indicated.  
**IMPORTANT NOTICE:** These particulars are for illustration only. We operate a policy of a continuous product development and individual features such as windows, garages and elevational treatments may vary from time to time as may heating and electrical layouts. Consequently these particulars should be treated as general guidance only and cannot be relied upon as accurately describing any of the specified matters prescribed by any order made under the property misdescriptions act 1991. Nor do they constitute a contract, part of a contract or a warranty. H. 6/11