

The Rana

4 bedroom, 3 storey townhouse



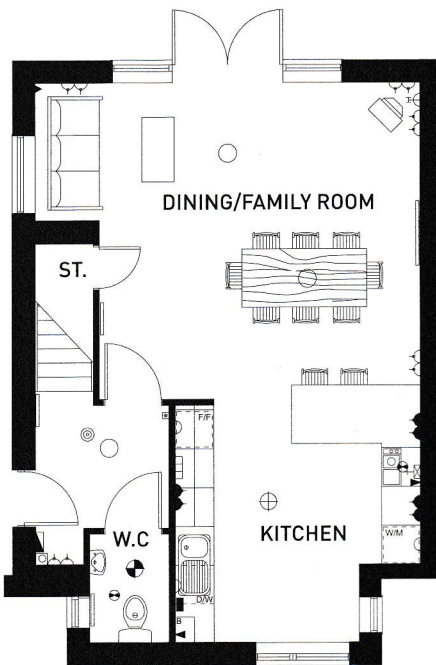
- Open plan Kitchen/Dining/Family Room with French doors to garden
- Large Lounge with Balcony
- En-suite and Balcony to Bedroom 1
- 3 further Bedrooms



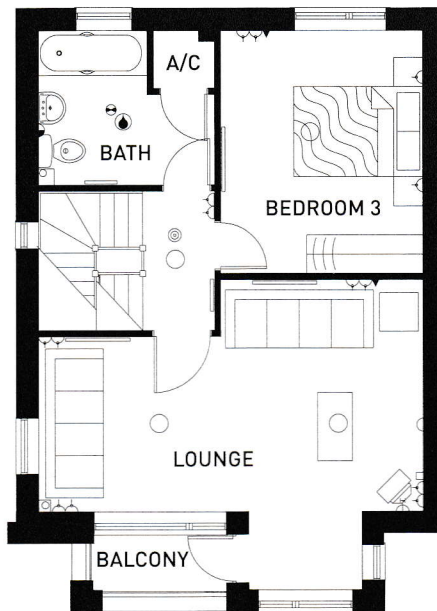


The Rana

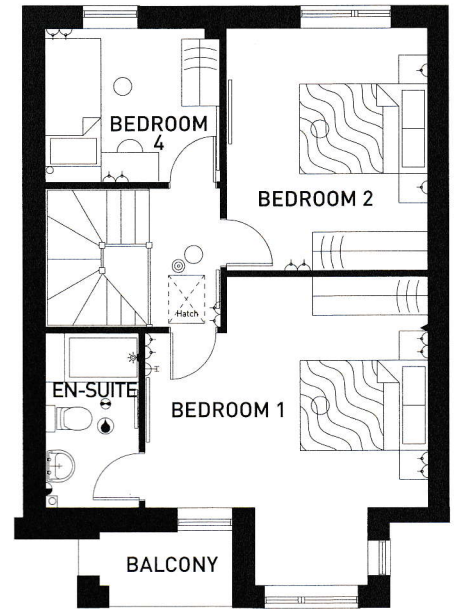
4 bedroom, 3 storey townhouse



Ground Floor



First Floor



Second Floor

KEY	Pendant lamp fitting	Double switched socket outlet above worktop	Gas point
	Batten lamp fitting	Socket outlet below worktop switch from control panel	Smoke detector
	Splash proof lamp fitting	Shaver socket	Radiator
	Energy efficient light	Telephone outlet point	A/C Airing cupboard
Switched socket outlet	T.V. aerial socket	W/M Washing machine space	D/W Dishwasher machine space
Double switched socket outlet	Cooker control unit	F/F Fridge/Freezer space	
Switched socket outlet above worktop	Extractor fan		

Ground Floor (Approximate Dimensions)

Kitchen	3785 x 3675 max 12'5" x 12'0" max
Dining/ Family Room	5965 x 4895 max 19'6" x 16'0" max
W.C	2225 x 1675 7'3" x 5'5"

First Floor (Approximate Dimensions)

Lounge	5965 x 4800 max 19'6" x 15'8" max
Bedroom 3	3770 x 3140 12'4" x 10'3"
Bathroom	2735 x 2400 max 8'11" x 7'10" max

Second Floor (Approximate Dimensions)

Bedroom 1	4800 x 4420 max 15'8" x 14'6" max
En-suite	2712 x 1455 8'10" x 4'9"
Bedroom 2	3770 x 3140 12'4" x 10'3"
Bedroom 4	2735 x 2395 8'11" x 7'10"

Note: Dimensions should not be used for carpet sizes, appliance spaces or items of furniture. Purchasers furniture may be of a different size to that indicated.
IMPORTANT NOTICE: These particulars are for illustration only. We operate a policy of a continuous product development and individual features such as windows, garages and elevational treatments may vary from time to time as may heating and electrical layouts. Consequently these particulars should be treated as general guidance only and cannot be relied upon as accurately describing any of the specified matters prescribed by any order made under the property misdescriptions act 1991. Nor do they constitute a contract, part of a contract or a warranty. H. 6/11