

The Nembus

4 bedroom, 3 storey townhouse



- Open plan Kitchen/Dining/Family Room with French doors to garden
- Lounge with French doors to Balcony
- Bedroom 1 with Balcony



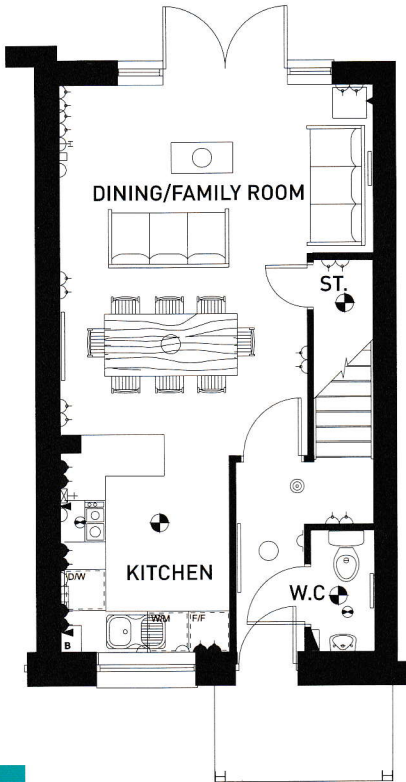
BARRATT
HOMES
find the one



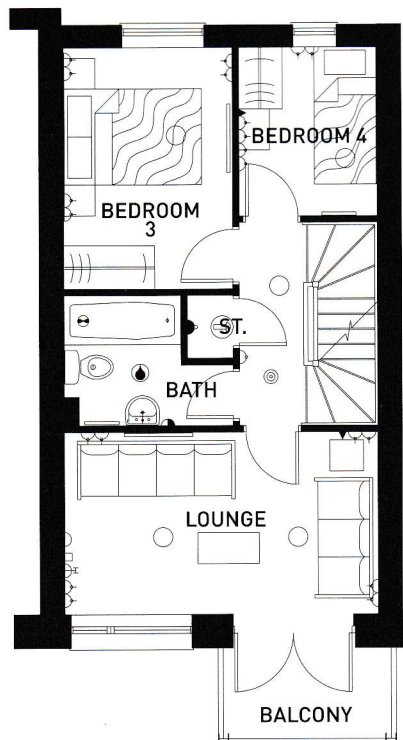
The Nembus

4 bedroom, 3 storey townhouse

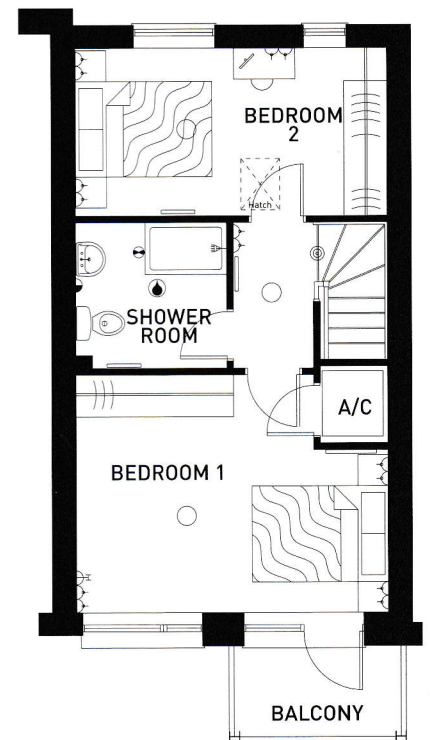
Please Note:
Plots available may differ from example. See Sales Adviser for details.



Ground Floor



First Floor



Second Floor

KEY

- Pendant lamp fitting
- ⊕ Batten lamp fitting
- ⦿ Splash proof lamp fitting
- ⊗ Energy efficient light
- ⌋ Switched socket outlet
- ⌋ Double switched socket outlet
- ⌋ Switched socket outlet above worktop

- ⌋ Double switched socket outlet above worktop
- ⌋ Socket outlet below worktop switch from control panel
- ⌋ Shaver socket
- ▲ Telephone outlet point
- ⌋ T.V. aerial socket
- ⊠ Cooker control unit
- ⊕ Extractor fan

- ▼ Gas point
- ⊙ Smoke detector
- Radiator
- A/C Airing cupboard
- W/M Washing machine space
- D/W Dishwasher machine space
- F/F Fridge/Freezer space

Ground Floor (Approximate Dimensions)

Kitchen	2810 x 2450 9'2" x 8'0"
Dining/ Family Room	5400 max x 4580 17'8" max x 15'0"
W.C.	1750 x 925 5'8" x 3'0"

First Floor (Approximate Dimensions)

Lounge	4580 x 2665 15'0" x 8'8"
Bedroom 3	3520 x 2470 11'6" x 8'1"
Bedroom 4	2460 x 2015 8'0" x 6'7"
Bathroom	2470 x 1910 max 8'1" x 6'3" max

Second Floor (Approximate Dimensions)

Bedroom 1	4580 x 3465 max 15'0" x 11'4" max
Bedroom 2	4580 x 2450 15'0" x 8'0"
Shower Room	2225 x 2100 7'3" x 6'10"

Note: Dimensions should not be used for carpet sizes, appliance spaces or items of furniture. Purchasers furniture may be of a different size to that indicated.
IMPORTANT NOTICE: These particulars are for illustration only. We operate a policy of a continuous product development and individual features such as windows, garages and elevational treatments may vary from time to time as may heating and electrical layouts. Consequently these particulars should be treated as general guidance only and cannot be relied upon as accurately describing any of the specified matters prescribed by any order made under the property misdescriptions act 1991. Nor do they constitute a contract, part of a contract or a warranty. H. 6/11